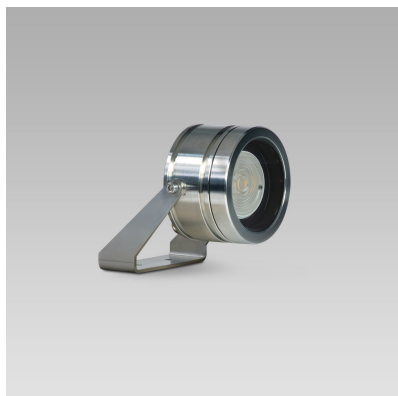


TITO90 (Model)



TECHNICAL INFORMATION

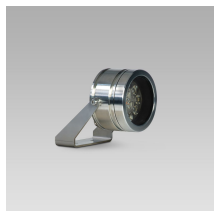
[IES Files](#) 

Watt	4W – 12W
Luminaire	Up to 1650lm
CCT	3000K – RGBW
CRI	>80
Wiring	
LED life time	> 60000h - L80 - B20 (Ta 25°C)
Color	Stainless Steel - 30

DESCRIPTION



VERSIONS *(Click on below link to configure your product)*



[tito90](#)

Size:
 Ø 3" 19/32
 4" 1/4
 4" 21/32



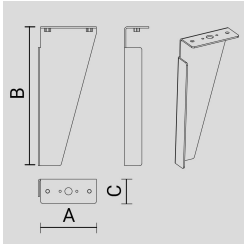


OPTICS

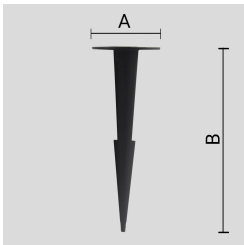


See accessories in the next page

AISI 316L STAINLESS STEEL PEG.

Arcluce Code **1099329X**Code Ref. **W9074****TECHNICAL INFORMATION****Weight** 0.66 lb

THERMOPLASTIC MATERIAL PEG.

Arcluce Code **1099257X**Code Ref. **W9970****TECHNICAL INFORMATION****Weight** 0.11 lb

PAINTED AISI 316L STAINLESS-STEEL SLOPED VISOR.

Arcluce Code **1099328X-12**Code Ref. **W9073-12****TECHNICAL INFORMATION****Color** Black - 12

Weight 0.44 lb

AISI 316L STAINLESS-STEEL SLOPED VISOR.

Arcluce Code **1099375X-30**Code Ref. **W9073-30****TECHNICAL INFORMATION****Color** Stainless Steel - 30

Weight 0.44 lb

PAINTED ALUMINIUM HONEYCOMB LOUVRE. TO BE ORDERED TOGETHER WITH THE LUMINAIRE.

Arcluce Code **1099348X-12**

Code Ref. **W9077-12**

**TECHNICAL INFORMATION**

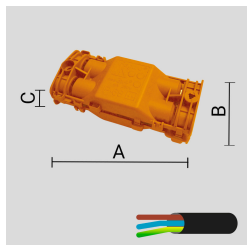
Color Black - 12

Weight 0.11 lb

JUNCTION BOX IP68 - 4 WAYS - 2/3 POLES.

Arcluce Code **1099259X**

Code Ref. **O7932**

**TECHNICAL INFORMATION**

Weight 0.11 lb

IP68 LINEAR JOINT - 2 WAYS - 2 POLES.

Arcluce Code **1099408X**

Code Ref.

**TECHNICAL INFORMATION**

Weight 0.07 lb

PAINTED ALUMINIUM HONEYCOMB LOUVRE. TO BE ORDERED TOGETHER WITH THE LUMINAIRE.

Arcluce Code **1099341X-12**

Code Ref. **W9076-12**

**TECHNICAL INFORMATION**

Color Black - 12

Weight 0.11 lb

JUNCTION BOX IP68 - 4 WAYS - 4/5 POLES.

Arcluce Code **1099407X**

Code Ref.

**TECHNICAL INFORMATION****Weight** 0.18 lb

Arcluce Code **1098009X**

Code Ref.

**TECHNICAL INFORMATION****Weight** 1.1 lb

Arcluce Code **1098010X**

Code Ref.

**TECHNICAL INFORMATION****Weight** 1.1 lb
