

# TITO55 (Model)



## TECHNICAL INFORMATION

[IES Files](#) 

<b>Watt</b>	3W – 4W
<b>Luminaire</b>	Up to 450lm
<b>CCT</b>	3000K – RGB
<b>CRI</b>	>80
<b>Wiring</b>	
<b>LED life time</b>	> 60000h - L80 - B20 (Ta 25°C)
<b>Color</b>	Stainless Steel - 30

## DESCRIPTION



## VERSIONS *(Click on below link to configure your product)*




[TITO 55](#)

Size:  
 Ø 2" 5/32  
 3" 21/32  
 3" 3/16



[TITO 55 SPIKE](#)

Size:  
 Ø 2" 5/32  
 11" 21/32  
 3"



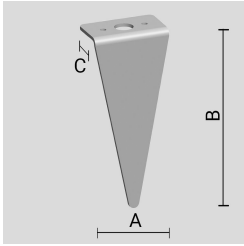


## OPTICS



See accessories in the next page

## AISI 316L STAINLESS STEEL PEG.

Arcluce Code **1099256X**Code Ref. **W9070****TECHNICAL INFORMATION****Weight** 0.18 lb

---

## PAINTED AISI 316L STAINLESS-STEEL SLOPED VISOR.

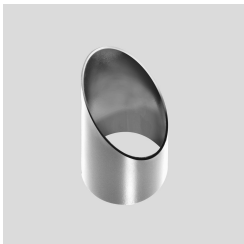
Arcluce Code **1099019X-12**Code Ref. **W9072-12****TECHNICAL INFORMATION****Color** Black - 12

---

**Weight** 0.33 lb

---

## AISI 316L STAINLESS-STEEL SLOPED VISOR.

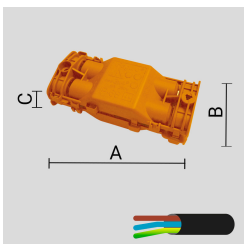
Arcluce Code **1099319X-30**Code Ref. **W9072-30****TECHNICAL INFORMATION****Color** Stainless Steel - 30

---

**Weight** 0.33 lb

---

## JUNCTION BOX IP68 - 4 WAYS - 2/3 POLES.

Arcluce Code **1099259X**Code Ref. **O7932****TECHNICAL INFORMATION****Weight** 0.11 lb

---

## IP68 LINEAR JOINT - 2 WAYS - 2 POLES.

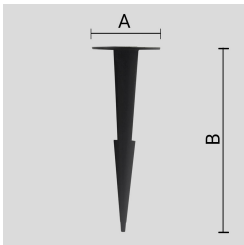
Arcluce Code **1099408X**

Code Ref.

**TECHNICAL INFORMATION****Weight** 0.07 lb

---

## THERMOPLASTIC MATERIAL PEG.

Arcluce Code **1099257X**Code Ref. **W9970****TECHNICAL INFORMATION****Weight** 0.11 lb

---

## JUNCTION BOX IP68 - 4 WAYS - 4/5 POLES.

Arcluce Code **1099407X**

Code Ref.

**TECHNICAL INFORMATION****Weight** 0.18 lb

---

Arcluce Code **1098009X**

Code Ref.

**TECHNICAL INFORMATION****Weight** 1.1 lb

---

Arcluce Code **1098010X**  
Code Ref.



**TECHNICAL INFORMATION**

**Weight** 1.1 lb

---