

# TITO25 (Model)



## TECHNICAL INFORMATION

[IES Files](#) ↓

<b>Watt</b>	2W
<b>Luminaire</b>	Up to 225lm
<b>CCT</b>	3000K – 4000K
<b>CRI</b>	>80
<b>Wiring</b>	
<b>LED life time</b>	> 60000h - L80 - B20 (Ta 25°C)
<b>Color</b>	Stainless Steel - 30

## DESCRIPTION

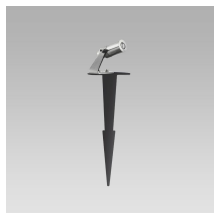


## VERSIONS *(Click on below link to configure your product)*




[TITO 25](#)

Size:  
 Ø 0" 31/32  
 2" 1/4  
 3" 1/32



[TITO 25 SPIKE](#)

Size:  
 Ø 0" 31/32  
 10" 1/4  
 2" 5/32





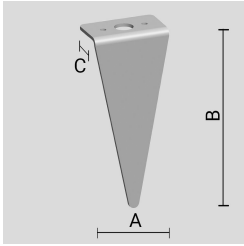
## OPTICS



See accessories in the next page

## AISI 316L STAINLESS STEEL PEG.

Arcluce Code **1099256X**  
Code Ref. **W9070**



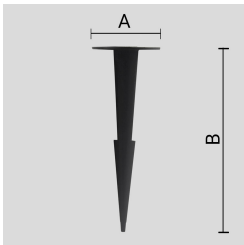
## TECHNICAL INFORMATION

Weight 0.18 lb

---

## THERMOPLASTIC MATERIAL PEG.

Arcluce Code **1099257X**  
Code Ref. **W9970**



## TECHNICAL INFORMATION

Weight 0.11 lb

---

## PAINTED AISI 316L STAINLESS-STEEL SLOPED VISOR.

Arcluce Code **1099340X-12**  
Code Ref. **W9075-12**



## TECHNICAL INFORMATION

Color Black - 12

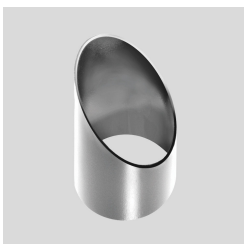
---

Weight 0.11 lb

---

## AISI 316L STAINLESS-STEEL SLOPED VISOR.

Arcluce Code **1099376X-30**  
Code Ref. **W9075-30**



## TECHNICAL INFORMATION

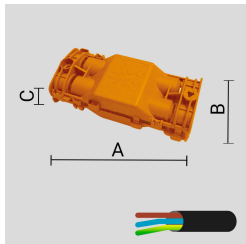
Color Stainless Steel - 30

---

Weight 0.11 lb

---

## JUNCTION BOX IP68 - 4 WAYS - 2/3 POLES.

Arcluce Code **1099259X**Code Ref. **O7932****TECHNICAL INFORMATION****Weight** 0.11 lb

---

## IP68 LINEAR JOINT - 2 WAYS - 2 POLES.

Arcluce Code **1099408X**

Code Ref.

**TECHNICAL INFORMATION****Weight** 0.07 lb

---