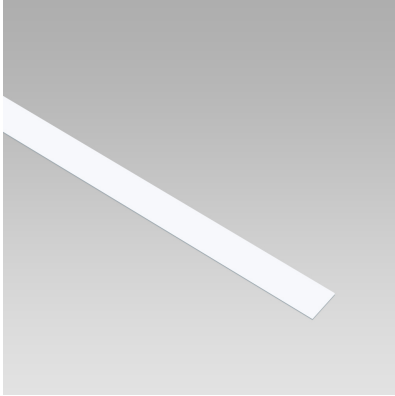


# T-RAIL (Model)



## TECHNICAL INFORMATION

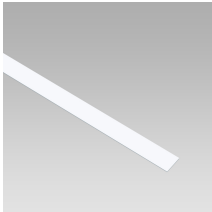
[IES Files](#)

<b>Watt</b>	3.5W – 14W
<b>Luminaire</b>	Up to 700lm
<b>CCT</b>	3000K – 4000K
<b>CRI</b>	>90
<b>Wiring</b>	
<b>LED life time</b>	> 60000h - L80 - B20 (Ta 25°C)
<b>Color</b>	colors.34

## DESCRIPTION

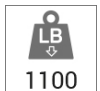


## VERSIONS *(Click on below link to configure your product)*



[comfort](#)

Size:  
 1" 3/8  
 3" 5/32  
 9" 27/32 to 39" 3/8



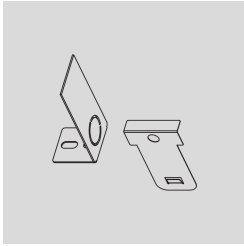
## OPTICS



See accessories in the next page

**T-RAIL GLASS END CAP + PULLER**Arcluce Code **1099579X-30**

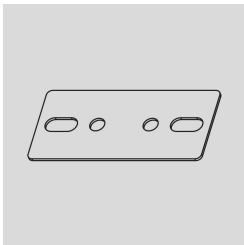
Code Ref.

**TECHNICAL INFORMATION****Weight** 0.22 lb

---

**T-RAIL GLASS LINEAR JOINT**Arcluce Code **1099580X-30**

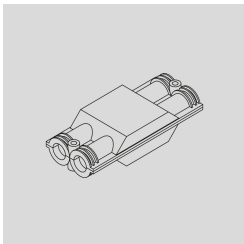
Code Ref.

**TECHNICAL INFORMATION****Weight** 0.22 lb

---

**JUNCTION BOX IP68 3-WAY 2 POLES MINI**Arcluce Code **1099578X**

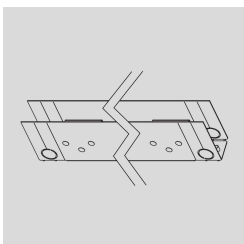
Code Ref.

**TECHNICAL INFORMATION****Weight** 0.22 lb

---

**T-RAIL GLASS RECESSED INSTALLATION BOX L=250**Arcluce Code **1099582X-30**

Code Ref.

**TECHNICAL INFORMATION****Color** Stainless Steel - 30

---

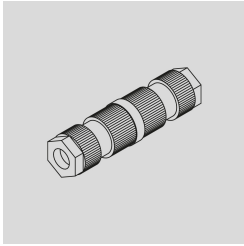
**Weight** 0.88 lb

---

## FEMALE CONNECTOR IP68 2 POLES MINI

Arcluce Code **1099618X**

Code Ref.

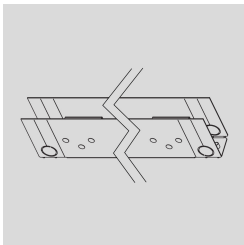
**TECHNICAL INFORMATION****Weight** 0.22 lb

---

## T-RAIL GLASS RECESSED INSTALLATION BOX L=500

Arcluce Code **1099583X-30**

Code Ref.

**TECHNICAL INFORMATION****Color** Stainless Steel - 30

---

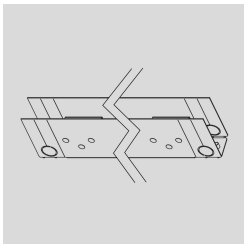
**Weight** 1.76 lb

---

## T-RAIL GLASS RECESSED INSTALLATION BOX L=1000

Arcluce Code **1099584X-30**

Code Ref.

**TECHNICAL INFORMATION****Color** Stainless Steel - 30

---

**Weight** 3.53 lb

---