



**LED LUMINAIRES
SUITABLE FOR WET LOCATIONS
SUITABLE FOR MOUNTING WITHIN
1.2m (4ft) OF THE GROUND
LEDS ARE NOT REPLACEABLE**



(Bollard L1)



(Urban L2 - L3)

⚠ IMPORTANT SAFETY INSTRUCTIONS:

ENG

ANY MODIFICATION TO THIS FITTING IS FORBIDDEN WITHOUT PRIOR AUTHORIZATION

- Risk of fire/electric shock: turn off power before installation or maintenance.
- Risk of fire/electric shock: fixtures should always be installed, inspected and maintained in accordance with local and national electric codes by qualified electricians only.
- Risk of bodily injury or property damage: the fixture can only be installed on concrete bases that are structurally compatible and adequate to the installation and physical location. Compatibility needs to be confirmed by engineering analysis.
- Risk of burning: make sure fixture is cool when performing maintenance.
- Risk of burning: this fixture has been engineered for outdoor usage. Do not install in areas with limited ventilation where heat could build up in the fixture; failure to do so may cause an unsafe condition.
- Risk of burning: keep fixtures away from materials that may burn.
- Perform electrical and mechanical maintenance on a regular basis at least once per year. Harsh environments might require more frequent controls.
- Do not operate the fixtures with a missing or damaged shield.
- Do not place the fixture in contact with corrosive substances such as fertilizers, weed killers or detergents.
- Fixture screens should be cleaned on regular basis to ensure lighting performance are maintained.
- All gaskets, O-rings and sealing surfaces must be kept clean during installation and service; failure to do this may cause an unsafe condition.
- Read carefully these instruction before installing the fixture and retain for future reference.

SAVE THESE INSTRUCTIONS

Specifications and dimensions subject to change without notice.

This data sheet and other technical documents continually updated can be accessed at www.arcluce-us.com

TOOLS



- 3mm Allen wrench
- Adjustable wrench
- Small slotted screwdriver

SPECIFICATION

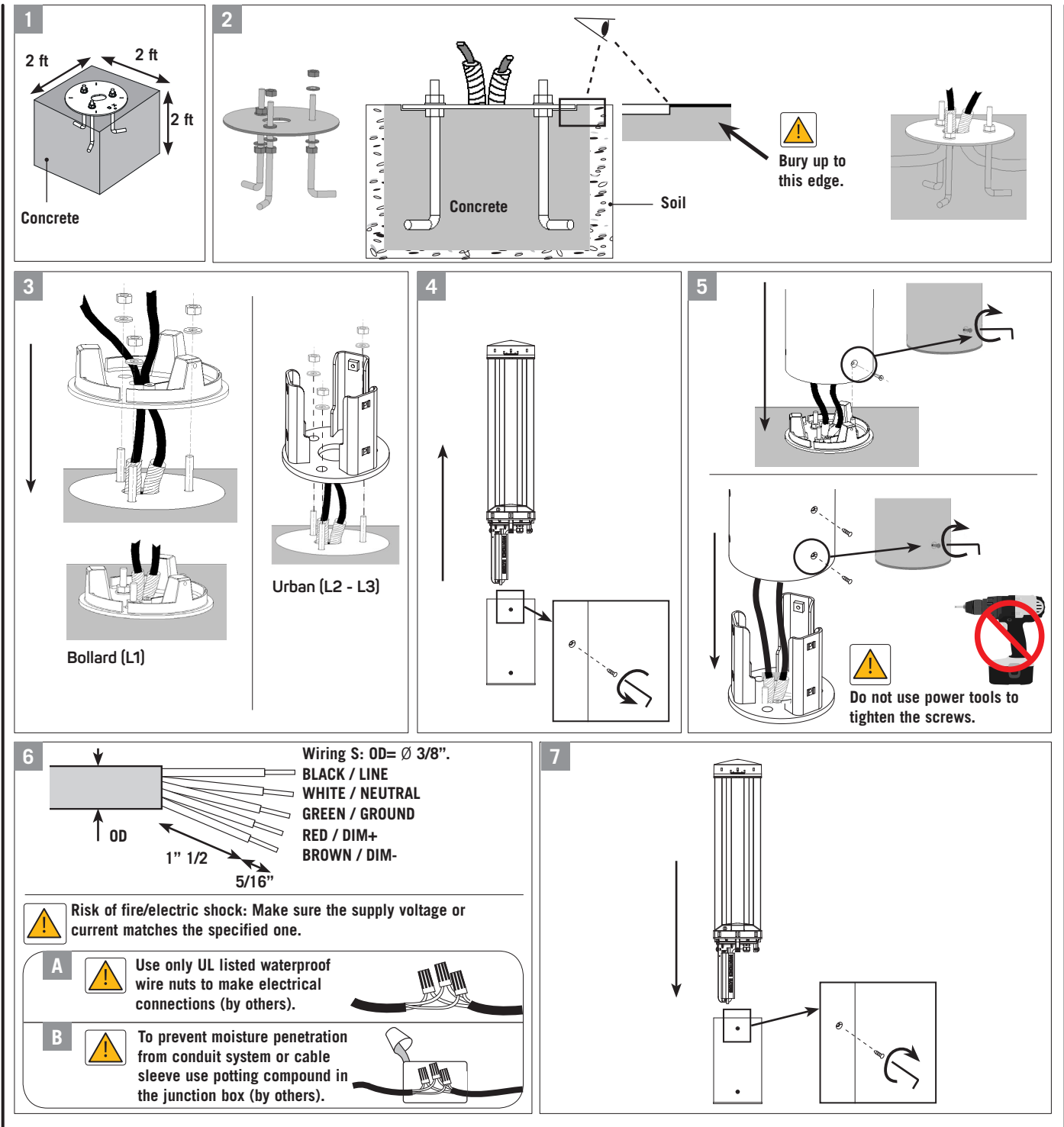
L1	L2 - L3		L1	L2	L3		L1 - L2 - L3
		WEIGHT	18.7 lb	49.6 lb	55.1 lb	WIRING	S
		EPA	1.94 ft ²	5.92 ft ²	6.46 ft ²	Mains Voltage	120 - 277V
		RATED T_A	25°C	25°C	25°C	Typical power consumption	27W
						Dimming	0-10V
L1= 3' 3" 3/8	L2= 9' 10" 1/8 L3= 11' 5" 3/4						

INSTALLATION

⚠ Do not place the light fitting into contact with substances causing corrosion such as fertilizers, weed killers and detergents.

⚠ Avoid installing the light fitting in sunk areas.

- 1 Dig hole and position conduit (by others) as required by national electrical code or any applicable regulation, see figure 1.
- 2 Assemble anchor bolts and base plate assuring that it will be flush with finished grade and secure it so that it will not be dislodged during concrete pouring, see figure 2.
- 3 Remove the top four nuts from the anchor bolts. Place base onto the bolts and replace the four nuts as required, see figure 3. To prevent moisture or water from backing up into the fixture, seal the conduit entry using a silicone or potting material.
- 4 Separate pole from optical part, see figure 4.
- 5 For bollard version, secure the fixture to die-cast base tightening the three mounting hex screws, see figure 5.
For L2 and L3, slide fixture onto base and secure the fixture to base tightening the six mounting hex screws, see figure 5.
- 6 Wire respecting the polarities, see figure 6.
- 7 Reassemble optical part onto the pole, see figure 7.



ACCESSORIES

