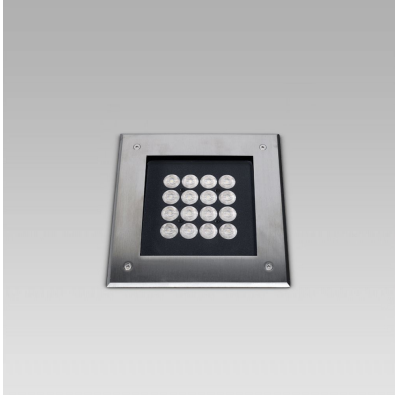


# QUAD200 (Model)



## TECHNICAL INFORMATION

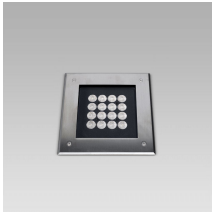
[IES Files](#) ↓

<b>Watt</b>	37W – 40W
<b>Luminaire</b>	Up to 4050lm
<b>CCT</b>	3000K – RGBW
<b>CRI</b>	>80
<b>Wiring</b>	
<b>LED life time</b>	> 60000h - L80 - B20 (Ta 25°C)
<b>Color</b>	Stainless Steel - 30

## DESCRIPTION



## VERSIONS *(Click on below link to configure your product)*



[trim above the ground - recessed deep box](#)

[trim above the ground - recessed L box](#)

[flush trim - recessed deep box](#)

[flush trim - recessed L box](#)

Size:

Size:

Size:

Size:

- 11" 3/16
- 7" 15/16
- 9" 1/16

- 6" 13/32 to 6" 9/16
- 13" 3/8
- 9" 1/16

- 11" 11/32
- 7" 15/16
- 8" 11/16

- 6" 23/32
- 13" 3/8
- 8" 11/16

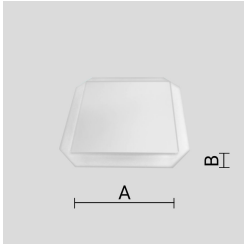


## OPTICS



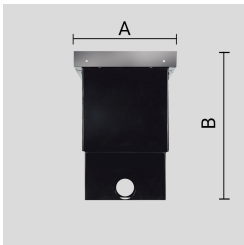
See accessories in the next page

## ANTI-SLIP OPAL GLASS.

Arcluce Code **1099280X**Code Ref. **O6599****TECHNICAL INFORMATION****Weight** 1.54 lb

---

## ZINC-COATED STEEL INSTALLATION-BOX (LONG) WITH AISI 316L STAINLESS STEEL EDGE.

Arcluce Code **1099035X**Code Ref. **O6595****TECHNICAL INFORMATION****Weight** 3.31 lb

---

## JUNCTION BOX IP68 - 4 WAYS - 4/5 POLES.

Arcluce Code **1099407X**

Code Ref.

**TECHNICAL INFORMATION****Weight** 0.18 lb

---

## IP68 LINEAR JOINT - 2 WAYS - 3 POLES.

Arcluce Code **1099409X**

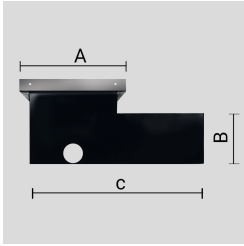
Code Ref.

**TECHNICAL INFORMATION****Weight** 0.07 lb

---

"L-SHAPED" ZINC-COATED STEEL INSTALLATION-BOX WITH AISI 316L STAINLESS STEEL EDGE.

Arcluce Code **1099034X**  
Code Ref. **O6594**

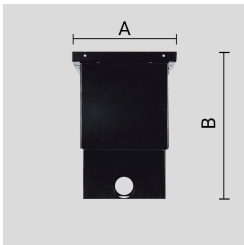
**TECHNICAL INFORMATION**

Weight 3.53 lb

---

ZINC-COATED STEEL INSTALLATION-BOX (LONG).

Arcluce Code **1099232X**  
Code Ref. **O6598**

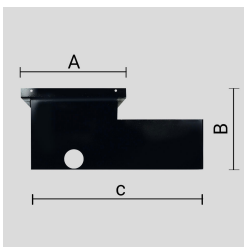
**TECHNICAL INFORMATION**

Weight 3.31 lb

---

"L-SHAPED" ZINC-COATED STEEL INSTALLATION-BOX.

Arcluce Code **1099234X**  
Code Ref. **O6597**

**TECHNICAL INFORMATION**

Weight 3.53 lb

---

Arcluce Code **1098009X**  
Code Ref.

**TECHNICAL INFORMATION**

Weight 1.1 lb

---

Arcluce Code **1098010X**  
Code Ref.



**TECHNICAL INFORMATION**

**Weight** 1.1 lb

---