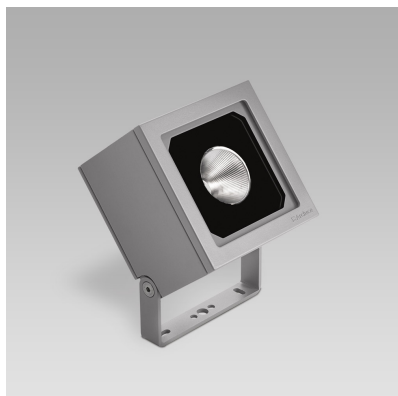


# PIXOL150 (Model)



## TECHNICAL INFORMATION

[IES Files](#) 

<b>Watt</b>	31W
<b>Luminaire</b>	Up to 3250lm
<b>CCT</b>	3000K – 4000K
<b>CRI</b>	>80
<b>Wiring</b>	120-277V 60Hz 0-10V
<b>LED life time</b>	> 60000h - L80 - B20 (Ta 25°C)
<b>Color</b>	Grey - 16 / Aluminium - 21

## DESCRIPTION

### Construction

- Die-cast aluminium body and trim (EN 47100).
- Double layer polyester powder paint resistant to corrosion and salt spray fog.
- Silicone rubber gaskets.
- AISI 316 stainless steel external screws.

### Electrical & Optics

- Universal input voltage: 120-277V 50/60Hz.
- 0-10V dimming available.
- Wiring on removable galvanized steel tray.
- High-efficacy LEDs with standard 3000K, 4000K (2700K or other CCTs available on request).
- Reflector made of engineering plastic metalized in high-vacuum.
- Screen made of 3/16" thermal-shock resistant tempered glass.
- Driver protected against voltage surges up to 5kV.

### Listings

- UL certified to U.S. and Canadian standards, suitable for wet locations (cULus mark).
- Rated IP66 per EN60598.
- Luminaire rated for -25°C minimum ambient temperature.
- High quality LED sources characterized according to IES TM-30, with high color consistency <3SDCM and long useful life >60000 hours at L80.

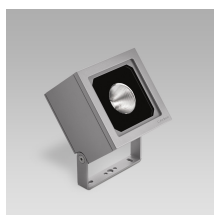
### Installation

- Surface installation.
- Galvanized and painted steel bracket.
- Supplied with power cord (18AWG conductors).
- Possibility for double cable gland M20 for through wiring.

IP66



## VERSIONS *(Click on below link to configure your product)*



### performance

Size:

7" 7/8

4" 17/32

5" 29/32

## OPTICS

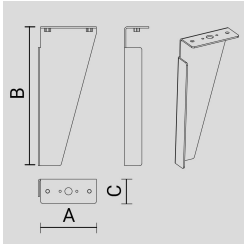


See accessories in the next page

## AISI 316L STAINLESS STEEL PEG.

Arcluce Code **1099329X**

Code Ref.

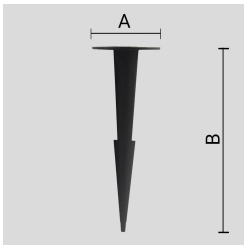
**TECHNICAL INFORMATION****Weight** 0.66 lb

---

## THERMOPLASTIC MATERIAL PEG.

Arcluce Code **1099257X**

Code Ref.

**TECHNICAL INFORMATION****Weight** 0.11 lb

---