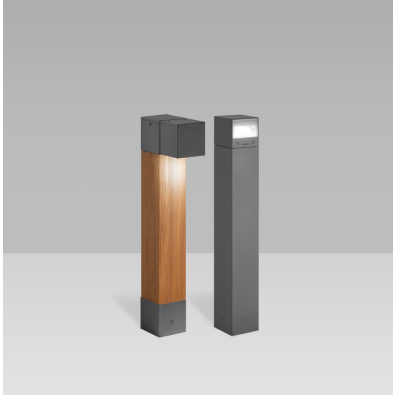


PIXOL110 (Model)



TECHNICAL INFORMATION

[IES Files](#) ↓

Watt	10W – 20W
Luminaire	Up to 1180lm
CCT	3000K – 4000K
CRI	>80
Wiring	
LED life time	> 60000h - L80 - B20 (Ta 25°C)
Color	Grey - 16 / Aluminium - 21

DESCRIPTION



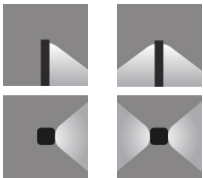
VERSIONS *(Click on below link to configure your product)*



side - single light fitting	side - double light fitting	side - single light fitting	side - double light fitting	top - oneway	top - twoway	top - oneway	top - twoway
Size:	Size:	Size:	Size:	Size:	Size:	Size:	Size:
8" 9/32 27" 9/16	12" 19/32 27" 9/16	8" 9/32 27" 9/16	12" 19/32 27" 9/16	4" 11/32 28" 3/4	4" 11/32 28" 3/4	4" 11/32 28" 3/4	4" 11/32 28" 3/4
4" 11/32	4" 11/32	4" 11/32	4" 11/32	4" 11/32	4" 11/32	4" 11/32	4" 11/32



OPTICS

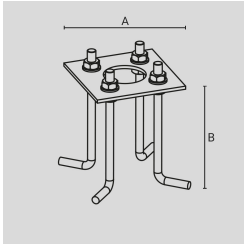


See accessories in the next page

ZINC-COATED AND PAINTED STEEL BASE PLATE WITH ZINC-COATED STEEL STUD BOLTS. 132 MM HIGH.

Arcluce Code **1099401X-16**

Code Ref.



TECHNICAL INFORMATION

Color Grey - 16

Weight 2.2 lb

JUNCTION BOX IP68 - 4 WAYS - 4/5 POLES.

Arcluce Code **1099407X**

Code Ref.



TECHNICAL INFORMATION

Weight 0.18 lb

IP68 LINEAR JOINT - 2 WAYS - 3 POLES.

Arcluce Code **1099409X**

Code Ref.



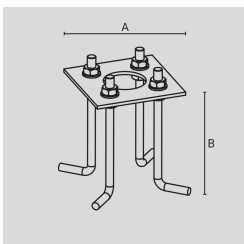
TECHNICAL INFORMATION

Weight 0.07 lb

GALVANIZED AND PAINTED STEEL BASE PLATE WITH GALVANIZED STEEL STUD BOLTS. 132 MM HIGH.

Arcluce Code **1099401X-21**

Code Ref.



TECHNICAL INFORMATION

Color Aluminium - 21

Weight 2.2 lb