

# PANDA-Q210 (Model)



## TECHNICAL INFORMATION

[IES Files](#) 

Watt	12W
Luminaire	Up to 1450lm
CCT	3000K – 4000K
CRI	>80
Wiring	120-277V 60Hz SNS, 120-277V 60Hz 0-10V
LED life time	> 100000h - L80 - B20 (Ta 25°C)
Color	Aluminium - 21 / Grey - 16 / Black - 12 / White - 11

## DESCRIPTION

### Construction

- Die-cast aluminium body (EN 47100).
- Double layer polyester powder paint resistant to corrosion and salt spray fog.
- Silicone rubber gaskets.
- AISI 316 stainless steel external screws.

### Electrical & Optics

- Universal input voltage: 120-277V 50/60Hz.
- 0-10V dimming available.
- Driver protected against voltage surges up to 4kV.
- High-efficacy LEDs with standard 3000K, 4000K (2700K or other CCTs available on request).
- UV rays stabilized, 850°C glow wire test resistant, V2 self-extinguishing clear polycarbonate screen.

### Listings

- UL certified to U.S. and Canadian standards, suitable for wet locations (cULus mark).
- Suitable for mounting within 1.2 m (4 ft) of ground.
- Rated IP66 per EN60598.
- Luminaire rated for -25°C minimum ambient temperature.
- High quality LED sources characterized according to IES TM-30, with high color consistency <3SDCM and long useful life >60000 hours at L80.

### Installation

- Ceiling and wall installation.
- Die-cast aluminium base (EN 47100) for anchoring with rawlplugs.
- Available accessory for mounting on standard junction boxes.
- Double grommet for through wiring.
- Upon request: integral motion sensor.

IP66



## VERSIONS *(Click on below link to configure your product)*



[rimless | opal](#)

Size:

3" 5/32

8" 11/32



[rimless | glossy](#)

Size:

3" 5/32

8" 11/32



[half-rim | opal](#)

Size:

3" 5/16

8" 11/32



[half-rim | glossy](#)

Size:

3" 5/16

8" 11/32

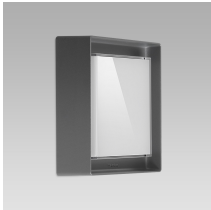


[full-rim | opal](#)

Size:

3" 5/16

8" 11/32



[full-rim | glossy](#)

Size:

3" 5/16

8" 11/32

**OPTICS**



