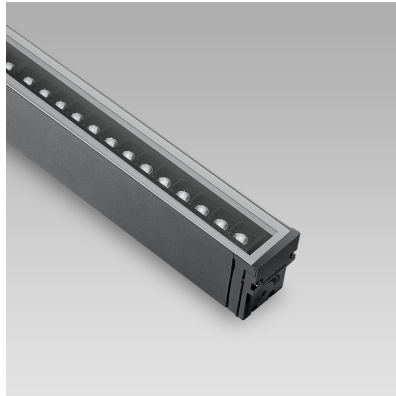


# KRION (Model)



## TECHNICAL INFORMATION

[IES Files](#)

<b>Watt</b>	20W – 80W
<b>Luminaire</b>	Up to 8300lm
<b>CCT</b>	3000K – RGBW
<b>CRI</b>	>80
<b>Wiring</b>	120-277V 60Hz / 0-10V, 120-277V 60Hz RDM/DMX
<b>LED life time</b>	> 60000h - L80 - B20 (Ta 25°C)
<b>Color</b>	Aluminium - 21 / Grey - 16

## DESCRIPTION

### Construction

- Extruded aluminium body.
- Die-cast aluminium caps (EN 47100).
- Double layer polyester powder paint resistant to corrosion and salt spray fog.
- Silicone rubber gaskets.
- AISI 316 stainless steel external screws.
- Goniometer scale to aim light.

### Electrical & Optics

- 0-10V dimming available.
- High-efficacy LEDs with standard 3000K, 4000K (2700K or other CCTs available on request).
- PMMA lenses for LEDs.
- Screen made of 5/16" thermal-shock resistant tempered glass.

### Listings

- UL certified to U.S. and Canadian standards, suitable for wet locations (cULus mark).
- Suitable for mounting within 1.2 m (4 ft) of ground.
- Rated IP66 per EN60598.
- Luminaire rated for -20°C minimum ambient.
- High quality LED sources characterized according to IES TM-30, with high color consistency <3SDCM and long useful life >60000 hours at L80.

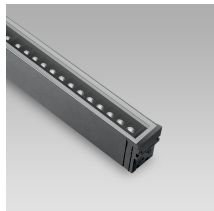
### Installation

- Surface installation.
- Double cable gland M20 for through wiring.
- Support brackets to be ordered separately.

IP66



## VERSIONS *(Click on below link to configure your product)*



[performance+](#)

Size:

4" 1/4

3" 15/32

13" 5/8 to 48" 7/32

## OPTICS

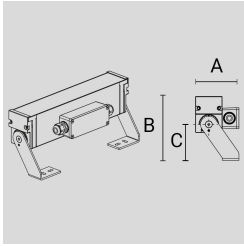


See accessories in the next page

## PAINTED STEEL REVOLVING SUPPORT BRACKETS (2 PCS).

Arcluce Code **1099373X-21**

Code Ref.

**TECHNICAL INFORMATION**

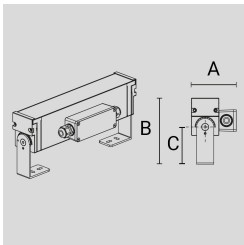
<b>Color</b>	Aluminium - 21
--------------	----------------

<b>Weight</b>	1.32 lb
---------------	---------

## PAINTED STEEL REVOLVING SUPPORT BRACKETS (2 PCS).

Arcluce Code **1099370X-21**

Code Ref.

**TECHNICAL INFORMATION**

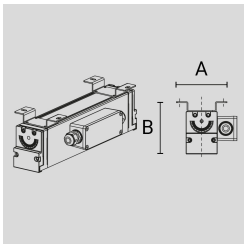
<b>Color</b>	Aluminium - 21
--------------	----------------

<b>Weight</b>	1.1 lb
---------------	--------

## PAINTED STEEL SUPPORT BRACKETS (2 PCS).

Arcluce Code **1099371X-21**

Code Ref.

**TECHNICAL INFORMATION**

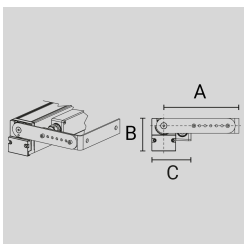
<b>Color</b>	Aluminium - 21
--------------	----------------

<b>Weight</b>	1.54 lb
---------------	---------

## PAINTED REVOLVING STEEL AND EXTENSIBLE SUPPORT BRACKETS (2 PCS).

Arcluce Code **1099372X-21**

Code Ref.

**TECHNICAL INFORMATION**

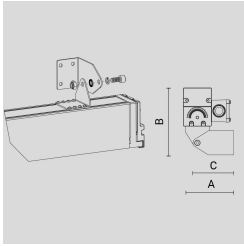
<b>Color</b>	Aluminium - 21
--------------	----------------

<b>Weight</b>	1.54 lb
---------------	---------

## ADJUSTING FIXING BRACKETS (2 PCS) - ALUMINIUM (RAL 9005)

Arcluce Code **1099577X-21**

Code Ref.

**TECHNICAL INFORMATION**

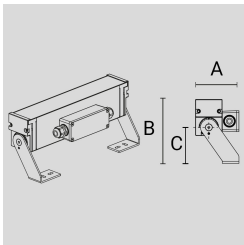
<b>Color</b>	Aluminium - 21
--------------	----------------

<b>Weight</b>	0.44 lb
---------------	---------

## PAINTED STEEL REVOLVING SUPPORT BRACKETS (2 PCS).

Arcluce Code **1099373X-16**

Code Ref.

**TECHNICAL INFORMATION**

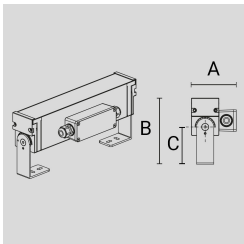
<b>Color</b>	Grey - 16
--------------	-----------

<b>Weight</b>	1.32 lb
---------------	---------

## PAINTED STEEL REVOLVING SUPPORT BRACKETS (2 PCS).

Arcluce Code **1099370X-16**

Code Ref.

**TECHNICAL INFORMATION**

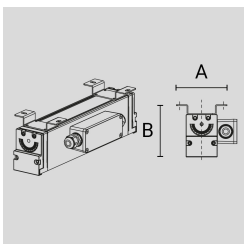
<b>Color</b>	Grey - 16
--------------	-----------

<b>Weight</b>	1.1 lb
---------------	--------

## PAINTED STEEL SUPPORT BRACKETS (2 PCS).

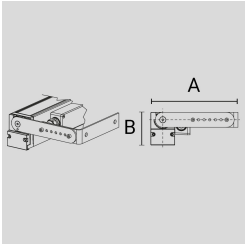
Arcluce Code **1099371X-16**

Code Ref.

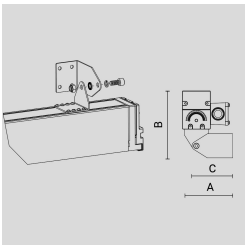
**TECHNICAL INFORMATION**

<b>Color</b>	Grey - 16
--------------	-----------

<b>Weight</b>	1.54 lb
---------------	---------

**PAINTED REVOLVING STEEL AND EXTENSIBLE SUPPORT BRACKETS (2 PCS).**
**Arcluce Code      1099372X-16**
**Code Ref.**

**TECHNICAL INFORMATION**
**Color**                      Grey - 16

**Weight**                     1.54 lb

**ADJUSTING FIXING BRACKETS (2 PCS) GREY, SIMILAR TO (RAL 7024)**
**Arcluce Code      1099577X-16**
**Code Ref.**

**TECHNICAL INFORMATION**
**Color**                      Grey - 16

**Weight**                     0.44 lb

**Arcluce Code      1098009X**
**Code Ref.**

**TECHNICAL INFORMATION**
**Weight**                     1.1 lb

**Arcluce Code      1098010X**
**Code Ref.**

**TECHNICAL INFORMATION**
**Weight**                     1.1 lb