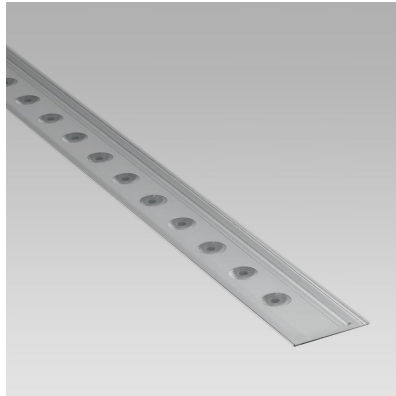


KRIO-IN (Model)



TECHNICAL INFORMATION

Watt	2.5W – 24W
Luminaire	Up to 2100lm
CCT	3000K – 4000K
CRI	>80
Wiring	VCC 24Vdc
LED life time	> 60000h - L80 - B20 (Ta 25°C)
Color	Aluminium - 21

DESCRIPTION

Construction

- Extruded aluminium body.
- Die-cast aluminium caps (EN 47100).
- Double layer polyester powder paint resistant to corrosion and salt spray fog.
- Silicone rubber gaskets.
- AISI 316 stainless steel external screws.

Electrical & Optics

- High-efficacy LEDs with standard 3000K, 4000K (2700K or other CCTs available on request).
- PMMA lenses for LEDs.
- Screen made of 5/16" thermal-shock resistant tempered glass.
- To be operated only with constant voltage 24Vdc Class 2 remote drivers (order separately).

Listings

- UL certified to U.S. and Canadian standards, suitable for wet locations (cULus mark).
- Rated IP67 per EN60598.
- Luminaire rated for -40°C minimum ambient temperature.
- 1000Kg static load capacity per EN60598.
- High quality LED sources characterized according to IES TM-30, with high color consistency <3SDCM and long useful life >60000 hours at L80.

Installation

- Recessed installation.
- Steel spring clips.
- Supplied with extruded aluminium recessed box.
- Supplied with power cord. 22AWG conductors.
- End caps to be ordered separately.

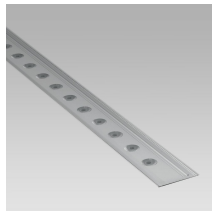
IP67



VERSIONS *(Click on below link to configure your product)*



[low luminance](#)



[high power](#)

- Size:
- 2" 17/32
 - 3" 5/8
 - 11" 13/16 to 27" 9/16

- Size:
- 2" 17/32
 - 3" 5/8
 - 27" 9/16

OPTICS



See accessories in the next page

STRAIGHT JOINT.

Arcluce Code **1099241X**
Code Ref. **O7931**

**TECHNICAL INFORMATION**

Weight 0.02 lb

PAINTED STEEL ENDS AND SUCTION CUPS (2 PCS).

Arcluce Code **1099018X-21**
Code Ref. **O7934-21**

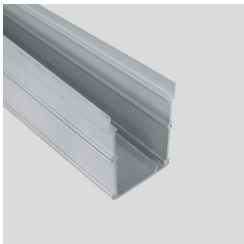
**TECHNICAL INFORMATION**

Color Aluminium - 21

Weight 0.44 lb

PAINTED EXTRUDED ALUMINIUM INSTALLATION-BOX

Arcluce Code **1099132X-21**
Code Ref. **O7937-21**

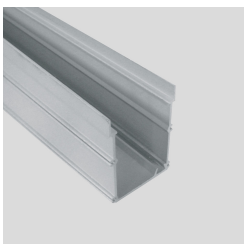
**TECHNICAL INFORMATION**

Color Aluminium - 21

Weight 2.43 lb

PAINTED EXTRUDED ALUMINIUM INSTALLATION-BOX

Arcluce Code **1099131X-21**
Code Ref. **O7936-21**

**TECHNICAL INFORMATION**

Color Aluminium - 21

Weight 1.1 lb
