

# INGROUND110 (Model)



## TECHNICAL INFORMATION

[IES Files](#)

<b>Watt</b>	W
<b>Luminaire</b>	
<b>CCT</b>	
<b>CRI</b>	>
<b>Wiring</b>	
<b>LED life time</b>	> h - L - B (Ta 25°C)
<b>Color</b>	Stainless Steel - 30

## DESCRIPTION



## VERSIONS *(Click on below link to configure your product)*



[round trim above the ground](#)

Size:  
 Ø 4" 11/16  
 5"  
 7" 15/32

[squared trim above the ground](#)

Size:  
 5"  
 7" 15/32  
 4" 23/32

[round trim flush with the ground](#)

Size:  
 Ø 4" 11/32  
 5"  
 7" 15/32



## OPTICS



See accessories in the next page

## THERMOPLASTIC MATERIAL RECESSED INSTALLATION BOX.

Arcluce Code **1099209X**  
Code Ref. **O7496**

**TECHNICAL INFORMATION**

Weight 0.42 lb

---

## BEAM SHAPING SNAP - AIM SNAP 0°-20°.

Arcluce Code **1099023X**  
Code Ref. **B3919**

**TECHNICAL INFORMATION**

Weight 0.02 lb

---

## BEAM SHAPING SNAP - BEAM SPREADER SNAP 25°.

Arcluce Code **1099024X**  
Code Ref. **B3910**

**TECHNICAL INFORMATION**

Weight 0.02 lb

---

## BEAM SHAPING SNAP - BEAM SPREADER SNAP 36°.

Arcluce Code **1099025X**  
Code Ref. **B3911**

**TECHNICAL INFORMATION**

Weight 0.02 lb

---

## BEAM SHAPING SNAP - BEAM SPREADER SNAP 60°.

Arcluce Code **1099026X**Code Ref. **B3912****TECHNICAL INFORMATION****Weight** 0.02 lb

---

## CCT SHIFT SNAP - WARM LIGHT 1/2 CTO.

Arcluce Code **1099028X**Code Ref. **B3921****TECHNICAL INFORMATION****Weight** 0.02 lb

---

## CCT SHIFT SNAP - WARM LIGHT 1/4 CTO.

Arcluce Code **1099029X**Code Ref. **B3920****TECHNICAL INFORMATION****Weight** 0.02 lb

---

## CCT SHIFT SNAP - WARM LIGHT 3/4 CTO.

Arcluce Code **1099030X**Code Ref. **B3922****TECHNICAL INFORMATION****Weight** 0.02 lb

---

## CCT SHIFT SNAP - CLEAR SNAP.

Arcluce Code **1099031X**Code Ref. **B3924****TECHNICAL INFORMATION****Weight** 0.02 lb

---

## BEAM SHAPING SNAP - FLAT TOP SNAP 25° X 25°.

Arcluce Code **1099037X**Code Ref. **B3916****TECHNICAL INFORMATION****Weight** 0.02 lb

---

## BEAM SHAPING SNAP - FLAT TOP SNAP 36° X 36°.

Arcluce Code **1099038X**Code Ref. **B3917****TECHNICAL INFORMATION****Weight** 0.02 lb

---

## BEAM SHAPING SNAP - BEAM LINEAR SNAP 10° X 25°

Arcluce Code **1099041X**Code Ref. **B3913****TECHNICAL INFORMATION****Weight** 0.02 lb

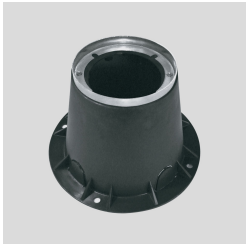
---

**BEAM SHAPING SNAP - BEAM LINEAR SNAP 10° X 36°**Arcluce Code **1099042X**Code Ref. **B3914****TECHNICAL INFORMATION****Weight** 0.02 lb

---

**BEAM SHAPING SNAP - BEAM LINEAR SNAP 10° X 60°**Arcluce Code **1099043X**Code Ref. **B3915****TECHNICAL INFORMATION****Weight** 0.02 lb

---

**THERMOPLASTIC MATERIAL RECESSED INSTALLATION BOX WITH AISI 316L STAINLESS STEEL COUNTER-RING.**Arcluce Code **1099219X**Code Ref. **O7497****TECHNICAL INFORMATION****Weight** 0.64 lb

---