

FORMAT1 (Model)



TECHNICAL INFORMATION

[IES Files](#) 

Watt	14W – 48W
Luminaire	Up to 5250lm
CCT	3000K – 4000K
CRI	>80
Wiring	120-277V 60Hz / 0-10V
LED life time	> 60000h - L80 - B20 (Ta 25°C)
Color	Grey - 16 / Aluminium - 21

DESCRIPTION

Construction

- Die-cast aluminium body and trim (EN 47100).
- Double layer polyester powder paint resistant to corrosion and salt spray fog.
- Silicone rubber gaskets.
- AISI 316 stainless steel external screws.
- Goniometer scale to aim light.

Electrical & Optics

- Universal input voltage: 120-277V 50/60Hz.
- 0-10V dimming available.
- Wiring on removable galvanized steel tray.
- High-efficacy LEDs with standard 3000K, 4000K (2700K or other CCTs available on request).
- PMMA lenses for LEDs.
- Screen made of 3/16" thermal-shock resistant tempered glass.
- Driver protected against voltage surges up to 5kV.

Listings

- UL certified to U.S. and Canadian standards, suitable for wet locations (cULus mark).
- Suitable for mounting within 1.2 m (4 ft) of ground.
- Rated IP66 per EN60598.
- Luminaire rated for -25°C minimum ambient temperature.
- High quality LED sources characterized according to IES TM-30, with high color consistency <3SDCM and long useful life >60000 hours at L80.

Installation

- Surface installation.
- Galvanized and painted steel bracket.
- Supplied with power cord (18AWG conductors).

IP66



VERSIONS *(Click on below link to configure your product)*


[format1](#)

Size:

9" 27/32

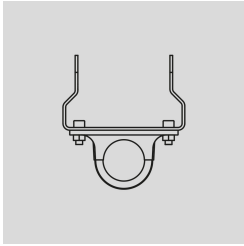
2" 15/16

19" 1/2

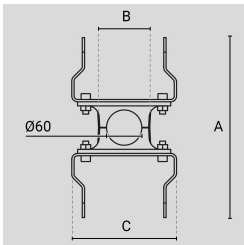
OPTICS



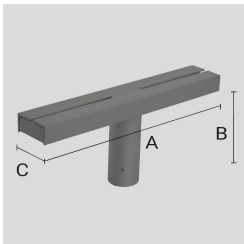
See accessories in the next page

PAINTED DIE-CAST ALUMINIUM SINGLE POLE ATTACHMENT (Ø60).
Arcluce Code 1099413X-16
Code Ref.

TECHNICAL INFORMATION
Color Grey - 16

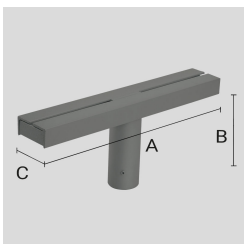
Weight 3.2 lb

PAINTED DIE-CAST ALUMINIUM DOUBLE POLE ATTACHMENT (Ø60).
Arcluce Code 1099414X-16
Code Ref.

TECHNICAL INFORMATION
Color Grey - 16

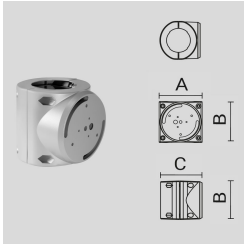
Weight 5.07 lb

PAINTED STEEL FLOODLIGHT-SUPPORTING BRACKET, FOR Ø 60 MM POLE.
Arcluce Code 1099152X-16
Code Ref. W8956-16

TECHNICAL INFORMATION
Color Grey - 16

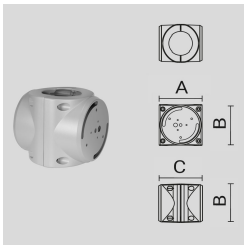
Weight 17.64 lb

PAINTED STEEL FLOODLIGHT-SUPPORTING BRACKET, FOR Ø 60 MM POLE.
Arcluce Code 1099153X-16
Code Ref. W8954-16

TECHNICAL INFORMATION
Color Grey - 16

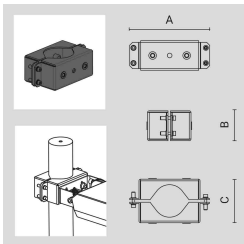
Weight 7.17 lb

PAINTED DIE-CAST ALUMINIUM AND STEEL SINGLE POLE ATTACHMENT (Ø 102 MM).
Arcluce Code 1099470X-16
Code Ref.

TECHNICAL INFORMATION
Color Grey - 16

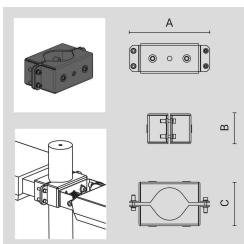
Weight 5.73 lb

PAINTED DIE-CAST ALUMINIUM AND STEEL DOUBLE POLE ATTACHMENT (Ø 102 MM) .
Arcluce Code 1099471X-16
Code Ref.

TECHNICAL INFORMATION
Color Grey - 16

Weight 8.16 lb

ADJUSTABLE POLE BRACKET FOR 1 LIGHT FITTING FOR Ø=76 MM POLE GREY, SIMILAR TO (RAL 7024)
Arcluce Code 1099514X-16
Code Ref.

TECHNICAL INFORMATION
Color Grey - 16

Weight 3.09 lb

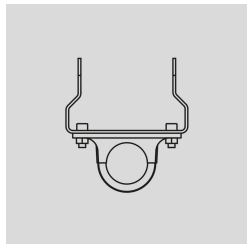
ADJUSTABLE POLE BRACKET FOR 2 LIGHT FITTINGS FOR Ø=76MM POLE - GREY, SIMILAR TO (RAL 7024)
Arcluce Code 1099515X-16
Code Ref.

TECHNICAL INFORMATION
Color Grey - 16

Weight 3.31 lb

PAINTED DIE-CAST ALUMINIUM SINGLE POLE ATTACHMENT (Ø60).

Arcluce Code **1099413X-21**

Code Ref.

**TECHNICAL INFORMATION**

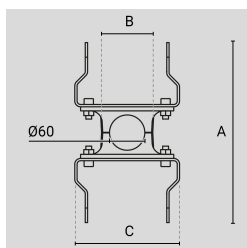
Color	Aluminium - 21
--------------	----------------

Weight	3.2 lb
---------------	--------

PAINTED DIE-CAST ALUMINIUM DOUBLE POLE ATTACHMENT (Ø60).

Arcluce Code **1099414X-21**

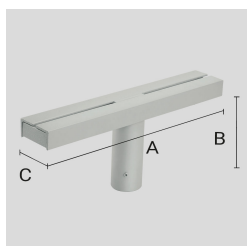
Code Ref.

**TECHNICAL INFORMATION**

Color	Aluminium - 21
--------------	----------------

Weight	5.07 lb
---------------	---------

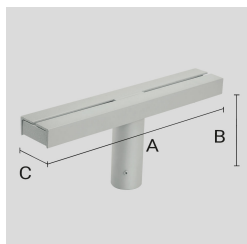
PAINTED STEEL FLOODLIGHT-SUPPORTING BRACKET, FOR Ø 60 MM POLE.

Arcluce Code **1099152X-21**Code Ref. **W8956-21****TECHNICAL INFORMATION**

Color	Aluminium - 21
--------------	----------------

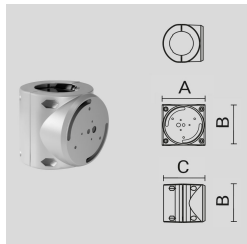
Weight	17.64 lb
---------------	----------

PAINTED STEEL FLOODLIGHT-SUPPORTING BRACKET, FOR Ø 60 MM POLE.

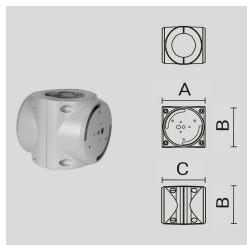
Arcluce Code **1099153X-21**Code Ref. **W8954-21****TECHNICAL INFORMATION**

Color	Aluminium - 21
--------------	----------------

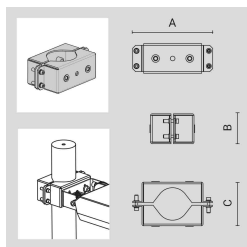
Weight	7.17 lb
---------------	---------

PAINTED DIE-CAST ALUMINIUM AND STEEL SINGLE POLE ATTACHMENT (Ø 102 MM).
Arcluce Code 1099470X-21
Code Ref.

TECHNICAL INFORMATION
Color Aluminium - 21

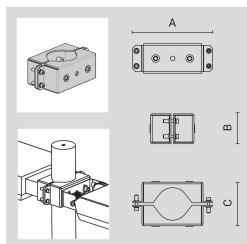
Weight 5.73 lb

PAINTED DIE-CAST ALUMINIUM AND STEEL DOUBLE POLE ATTACHMENT (Ø 102 MM) .
Arcluce Code 1099471X-21
Code Ref.

TECHNICAL INFORMATION
Color Aluminium - 21

Weight 8.16 lb

ADJUSTABLE POLE BRACKET FOR 1 LIGHT FITTING FOR Ø=76 MM POLE -ALUMINIUM (RAL 9005)
Arcluce Code 1099514X-21
Code Ref.

TECHNICAL INFORMATION
Color Aluminium - 21

Weight 3.09 lb

ADJUSTABLE POLE BRACKET FOR 2 LIGHT FITTINGS FOR Ø=76MM POLE - ALUMINIUM (RAL 9005)
Arcluce Code 1099515X-21
Code Ref.

TECHNICAL INFORMATION
Color Aluminium - 21

Weight 3.31 lb

FORMAT ADJUSTABLE POLE ATTACHMENT Ø=60 GREY, SIMILAR TO (RAL 7024)Arcluce Code **1099598X-16**

Code Ref.

TECHNICAL INFORMATION

Color	Grey - 16
--------------	-----------

Weight	1.76 lb
---------------	---------

FORMAT ADJUSTABLE POLE ATTACHMENT Ø=60 ALUMINIUM (RAL 9005)Arcluce Code **1099598X-21**

Code Ref.

TECHNICAL INFORMATION

Color	Aluminium - 21
--------------	----------------

Weight	1.76 lb
---------------	---------
