

FORMAT1 (Model)



TECHNICAL INFORMATION

[IES Files](#)

Watt	21W – 97W
Luminaire	Up to 10350lm
CCT	3000K – RGBW
CRI	>80
Wiring	
LED life time	> 60000h - L80 - B20 (Ta 25°C)
Color	Grey - 16 / Aluminium - 21

DESCRIPTION



VERSIONS *(Click on below link to configure your product)*



[format1](#)

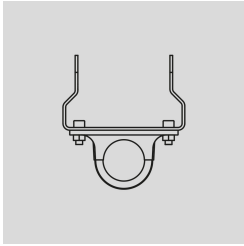
Size:
9" 27/32
2" 15/16
19" 1/2



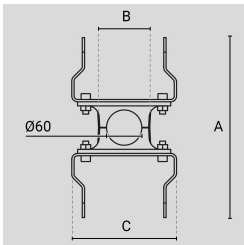
OPTICS



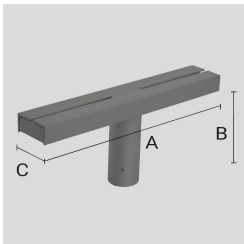
See accessories in the next page

PAINTED DIE-CAST ALUMINIUM SINGLE POLE ATTACHMENT (Ø60).
Arcluce Code 1099413X-16
Code Ref.

TECHNICAL INFORMATION
Color Grey - 16

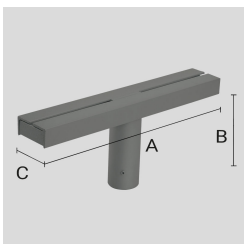
Weight 3.2 lb

PAINTED DIE-CAST ALUMINIUM DOUBLE POLE ATTACHMENT (Ø60).
Arcluce Code 1099414X-16
Code Ref.

TECHNICAL INFORMATION
Color Grey - 16

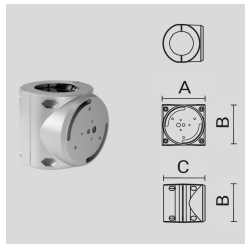
Weight 5.07 lb

PAINTED STEEL FLOODLIGHT-SUPPORTING BRACKET, FOR Ø 60 MM POLE.
Arcluce Code 1099152X-16
Code Ref. W8956-16

TECHNICAL INFORMATION
Color Grey - 16

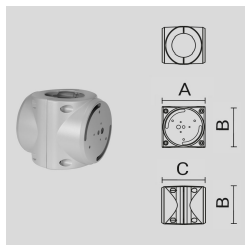
Weight 17.64 lb

PAINTED STEEL FLOODLIGHT-SUPPORTING BRACKET, FOR Ø 60 MM POLE.
Arcluce Code 1099153X-16
Code Ref. W8954-16

TECHNICAL INFORMATION
Color Grey - 16

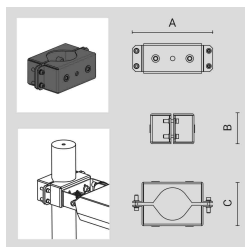
Weight 7.17 lb

PAINTED DIE-CAST ALUMINIUM AND STEEL SINGLE POLE ATTACHMENT (Ø 102 MM).
Arcluce Code 1099470X-16
Code Ref.

TECHNICAL INFORMATION
Color Grey - 16

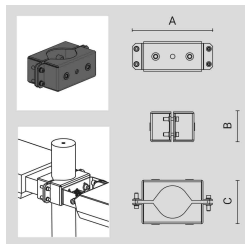
Weight 5.73 lb

PAINTED DIE-CAST ALUMINIUM AND STEEL DOUBLE POLE ATTACHMENT (Ø 102 MM) .
Arcluce Code 1099471X-16
Code Ref.

TECHNICAL INFORMATION
Color Grey - 16

Weight 8.16 lb

ADJUSTABLE POLE BRACKET FOR 1 LIGHT FITTING FOR Ø=76 MM POLE GREY, SIMILAR TO (RAL 7024)
Arcluce Code 1099514X-16
Code Ref.

TECHNICAL INFORMATION
Color Grey - 16

Weight 3.09 lb

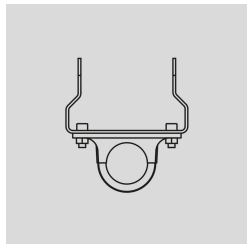
ADJUSTABLE POLE BRACKET FOR 2 LIGHT FITTINGS FOR Ø=76MM POLE - GREY, SIMILAR TO (RAL 7024)
Arcluce Code 1099515X-16
Code Ref.

TECHNICAL INFORMATION
Color Grey - 16

Weight 3.31 lb

PAINTED DIE-CAST ALUMINIUM SINGLE POLE ATTACHMENT (Ø60).

Arcluce Code **1099413X-21**

Code Ref.



TECHNICAL INFORMATION

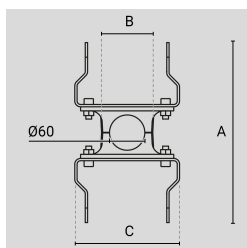
Color Aluminium - 21

Weight 3.2 lb

PAINTED DIE-CAST ALUMINIUM DOUBLE POLE ATTACHMENT (Ø60).

Arcluce Code **1099414X-21**

Code Ref.



TECHNICAL INFORMATION

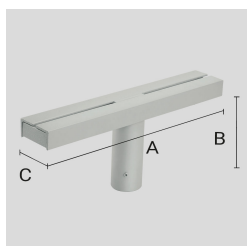
Color Aluminium - 21

Weight 5.07 lb

PAINTED STEEL FLOODLIGHT-SUPPORTING BRACKET, FOR Ø 60 MM POLE.

Arcluce Code **1099152X-21**

Code Ref. **W8956-21**



TECHNICAL INFORMATION

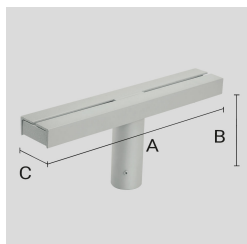
Color Aluminium - 21

Weight 17.64 lb

PAINTED STEEL FLOODLIGHT-SUPPORTING BRACKET, FOR Ø 60 MM POLE.

Arcluce Code **1099153X-21**

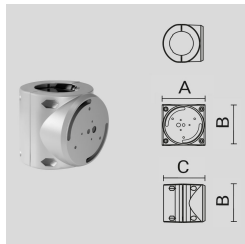
Code Ref. **W8954-21**



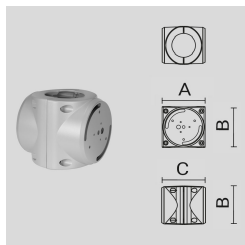
TECHNICAL INFORMATION

Color Aluminium - 21

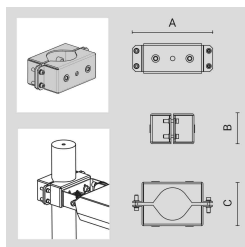
Weight 7.17 lb

PAINTED DIE-CAST ALUMINIUM AND STEEL SINGLE POLE ATTACHMENT (Ø 102 MM).
Arcluce Code 1099470X-21
Code Ref.

TECHNICAL INFORMATION
Color Aluminium - 21

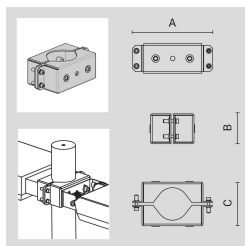
Weight 5.73 lb

PAINTED DIE-CAST ALUMINIUM AND STEEL DOUBLE POLE ATTACHMENT (Ø 102 MM) .
Arcluce Code 1099471X-21
Code Ref.

TECHNICAL INFORMATION
Color Aluminium - 21

Weight 8.16 lb

ADJUSTABLE POLE BRACKET FOR 1 LIGHT FITTING FOR Ø=76 MM POLE -ALUMINIUM (RAL 9005)
Arcluce Code 1099514X-21
Code Ref.

TECHNICAL INFORMATION
Color Aluminium - 21

Weight 3.09 lb

ADJUSTABLE POLE BRACKET FOR 2 LIGHT FITTINGS FOR Ø=76MM POLE - ALUMINIUM (RAL 9005)
Arcluce Code 1099515X-21
Code Ref.

TECHNICAL INFORMATION
Color Aluminium - 21

Weight 3.31 lb

FORMAT ADJUSTABLE POLE ATTACHMENT Ø=60 ALUMINIUM (RAL 9005)

Arcluce Code **1099598X-21**

Code Ref.

TECHNICAL INFORMATION

Color	Aluminium - 21
--------------	----------------

Weight	1.76 lb
---------------	---------

FORMAT ADJUSTABLE POLE ATTACHMENT Ø=60 GREY, SIMILAR TO (RAL 7024)

Arcluce Code **1099598X-16**

Code Ref.

TECHNICAL INFORMATION

Color	Grey - 16
--------------	-----------

Weight	1.76 lb
---------------	---------

Arcluce Code **1098009X**

Code Ref.

**TECHNICAL INFORMATION**

Weight	1.1 lb
---------------	--------

Arcluce Code **1098010X**

Code Ref.

**TECHNICAL INFORMATION**

Weight	1.1 lb
---------------	--------

IP68 LINEAR JOINT - 2 WAYS - 3 POLES.

Arcluce Code **1099409X**

Code Ref.



TECHNICAL INFORMATION

Weight 0.07 lb
