

# DUEDIECI (Model)



## TECHNICAL INFORMATION

[IES Files](#) 

|                      |                                |
|----------------------|--------------------------------|
| <b>Watt</b>          | 21W                            |
| <b>Luminaire</b>     | Up to 2000lm                   |
| <b>CCT</b>           | 3000K – 4000K                  |
| <b>CRI</b>           | >80                            |
| <b>Wiring</b>        | 120-277V 60Hz 0-10V            |
| <b>LED life time</b> | > 60000h - L80 - B20 (Ta 25°C) |
| <b>Color</b>         | Aluminium - 21 / Grey - 16     |

## DESCRIPTION

### Construction

- Die-cast aluminium body and trim (EN 47100).
- Double layer polyester powder paint resistant to corrosion and salt spray fog.
- Silicone rubber gaskets.
- AISI 316 stainless steel external screws.
- Goniometer scale to aim light.

### Electrical & Optics

- Universal input voltage: 120-277V 50/60Hz.
- 0-10V dimming available.
- Wiring on removable galvanized steel tray.
- High-efficacy LEDs with standard 3000K, 4000K (2700K or other CCTs available on request).
- Reflector made of engineering plastic metalized in high-vacuum.
- Screen made of 5/16" thermal-shock resistant tempered glass.

### Listings

- UL certified to U.S. and Canadian standards, suitable for wet locations (cULus mark).
- Suitable for mounting within 1.2 m (4 ft) of ground.
- Rated IP66 per EN60598.
- Luminaire rated for -30°C minimum ambient.
- High quality LED sources characterized according to IES TM-30, with high color consistency <3SDCM and long useful life >60000 hours at L80.

### Installation

- Surface installation.
- Die-cast aluminium base (EN 47100) for anchoring with rawlplugs.
- Available accessory for mounting on standard junction boxes.
- Supplied with power cord (18AWG conductors).

IP66



## VERSIONS *(Click on below link to configure your product)*


[driver included](#)

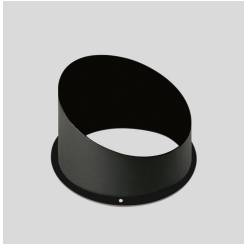
Size:  
 Ø 4" 11/32  
 9" 7/8  
 5" 5/16

## OPTICS



See accessories in the next page

## PAINTED ALUMINIUM SLOPED VISOR.

Arcluce Code **1099198X-12**Code Ref. **W9500-12****TECHNICAL INFORMATION**

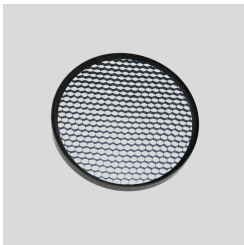
|              |            |
|--------------|------------|
| <b>Color</b> | Black - 12 |
|--------------|------------|

|               |         |
|---------------|---------|
| <b>Weight</b> | 0.04 lb |
|---------------|---------|

## ALUMINIUM HONEYCOMB LOUVRE WITH PAINTED STEEL EDGE.

Arcluce Code **1099346X-12**

Code Ref.

**TECHNICAL INFORMATION**

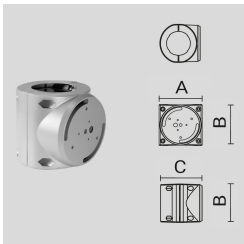
|              |            |
|--------------|------------|
| <b>Color</b> | Black - 12 |
|--------------|------------|

|               |         |
|---------------|---------|
| <b>Weight</b> | 0.04 lb |
|---------------|---------|

## PAINTED DIE-CAST ALUMINIUM SINGLE POLE ATTACHMENT (Ø 102 MM).

Arcluce Code **1099466X-21**

Code Ref.

**TECHNICAL INFORMATION**

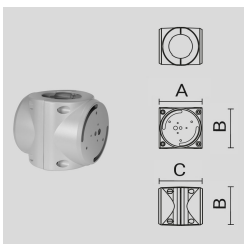
|              |                |
|--------------|----------------|
| <b>Color</b> | Aluminium - 21 |
|--------------|----------------|

|               |         |
|---------------|---------|
| <b>Weight</b> | 3.31 lb |
|---------------|---------|

## PAINTED DIE-CAST ALUMINIUM DOUBLE POLE ATTACHMENT (Ø 102 MM).

Arcluce Code **1099467X-21**

Code Ref.

**TECHNICAL INFORMATION**

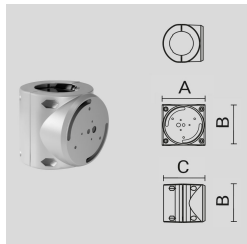
|              |                |
|--------------|----------------|
| <b>Color</b> | Aluminium - 21 |
|--------------|----------------|

|               |         |
|---------------|---------|
| <b>Weight</b> | 3.97 lb |
|---------------|---------|

PAINTED DIE-CAST ALUMINIUM SINGLE POLE ATTACHMENT (Ø 102 MM).

Arcluce Code **1099466X-16**

Code Ref.



**TECHNICAL INFORMATION**

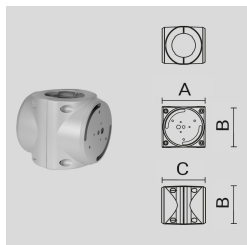
**Color** Grey - 16

**Weight** 3.31 lb

PAINTED DIE-CAST ALUMINIUM DOUBLE POLE ATTACHMENT (Ø 102 MM).

Arcluce Code **1099467X-16**

Code Ref.



**TECHNICAL INFORMATION**

**Color** Grey - 16

**Weight** 3.97 lb