

DUEDIECI (Model)



TECHNICAL INFORMATION

[IES Files](#) 

| | |
|----------------------|--|
| Watt | 6W – 21W |
| Luminaire | Up to 2000lm |
| CCT | 3000K – 4000K |
| CRI | >80 – >90 |
| Wiring | |
| LED life time | > 60000h - L80 - B20 (Ta 25°C), > 25000h - L - B (Ta 25°C) |
| Color | Aluminium - 21 / Grey - 16 |

DESCRIPTION



VERSIONS *(Click on below link to configure your product)*



[duedieci](#)

Size:
 Ø 4" 11/32
 9" 7/8
 5" 5/16


[duedieci GU10](#)

Size:
 Ø 4" 11/32
 9" 1/16
 6" 3/32


[duedieci spike GU10](#)

Size:
 Ø 4" 11/32
 17" 5/16
 6" 7/8



IK09



0.32ft²

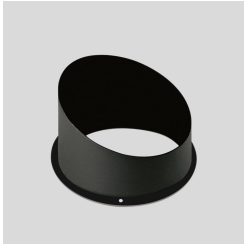
OPTICS



See accessories in the next page

PAINTED ALUMINIUM SLOPED VISOR.

Arcluce Code **1099198X-12**
Code Ref. **W9500-12**



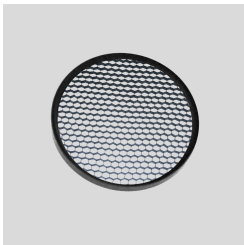
TECHNICAL INFORMATION

Color Black - 12

Weight 0.04 lb

ALUMINIUM HONEYCOMB LOUVRE WITH PAINTED STEEL EDGE.

Arcluce Code **1099346X-12**
Code Ref.



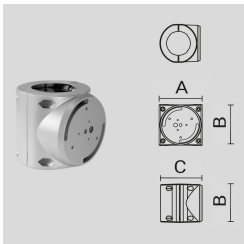
TECHNICAL INFORMATION

Color Black - 12

Weight 0.04 lb

PAINTED DIE-CAST ALUMINIUM SINGLE POLE ATTACHMENT (Ø 102 MM).

Arcluce Code **1099466X-21**
Code Ref.



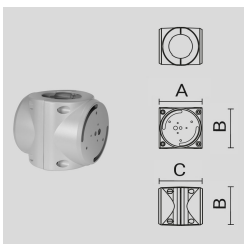
TECHNICAL INFORMATION

Color Aluminium - 21

Weight 3.31 lb

PAINTED DIE-CAST ALUMINIUM DOUBLE POLE ATTACHMENT (Ø 102 MM).

Arcluce Code **1099467X-21**
Code Ref.



TECHNICAL INFORMATION

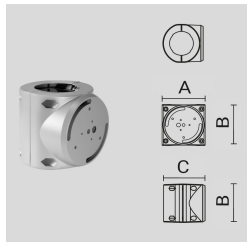
Color Aluminium - 21

Weight 3.97 lb

PAINTED DIE-CAST ALUMINIUM SINGLE POLE ATTACHMENT (Ø 102 MM).

Arcluce Code **1099466X-16**

Code Ref.



TECHNICAL INFORMATION

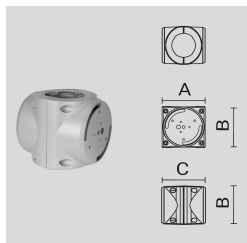
Color Grey - 16

Weight 3.31 lb

PAINTED DIE-CAST ALUMINIUM DOUBLE POLE ATTACHMENT (Ø 102 MM).

Arcluce Code **1099467X-16**

Code Ref.



TECHNICAL INFORMATION

Color Grey - 16

Weight 3.97 lb