

TITO55 (Model)



TECHNICAL INFORMATION

[IES Files](#) 

Watt	4W
Luminaire	Up to 450lm
CCT	3000K – 4000K
CRI	>80
Wiring	350mA
LED life time	> 60000h - L80 - B20 (Ta 25°C)
Color	Stainless Steel - 30

DESCRIPTION

Construction

- AISI 316L stainless steel body and trim.
- Silicone rubber gaskets.
- AISI 316 stainless steel external screws.

Electrical & Optics

- High-efficacy LEDs with standard 3000K, 4000K (2700K or other CCTs available on request).
- PMMA lenses for LEDs.
- Screen made of 3/16" thermal-shock resistant tempered glass.
- To be operated only with constant current 350mA Class 2 remote drivers (order separately).

Listings

- UL certified to U.S. and Canadian standards, suitable for wet locations (cULus mark).
- Rated IP68 per EN60598.
- Luminaire rated for -40°C minimum ambient temperature.
- High quality LED sources characterized according to IES TM-30, with high color consistency <3SDCM and long useful life >60000 hours at L80.

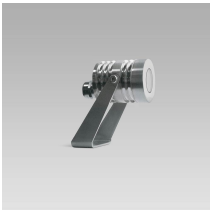
Installation

- Surface installation.
- AISI 316L stainless steel bracket.
- Supplied with power cord. 22AWG conductors.

IP68
40"



VERSIONS *(Click on below link to configure your product)*



[tito55](#)

Size:
Ø 2" 5/32
3" 21/32
3" 3/16

OPTICS



See accessories in the next page

PAINTED AISI 316L STAINLESS-STEEL SLOPED VISOR.

Arcluce Code **1099019X-12**
Code Ref. **W9072-12**

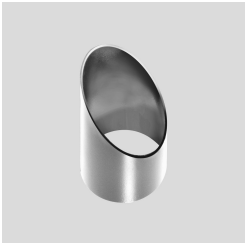


TECHNICAL INFORMATION

Color	Black - 12
Weight	0.33 lb

AISI 316L STAINLESS-STEEL SLOPED VISOR.

Arcluce Code **1099319X-30**
Code Ref. **W9072-30**



TECHNICAL INFORMATION

Color	Stainless Steel - 30
Weight	0.33 lb