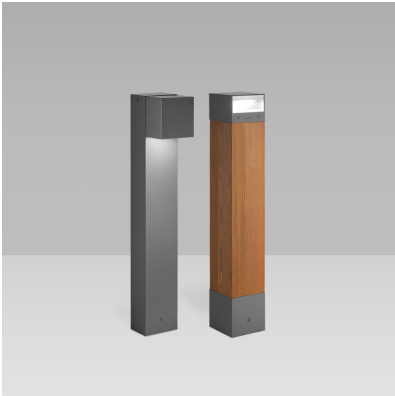


# PIXOL150 (Model)



## TECHNICAL INFORMATION

[IES Files](#) 

Watt	11W – 22W
Luminaire	Up to 1250lm
CCT	3000K – 4000K
CRI	>80
Wiring	120-277V 60Hz 0-10V
LED life time	> 60000h - L80 - B20 (Ta 25°C)
Color	Grey - 16 / Aluminium - 21

## DESCRIPTION

### Construction

- Die-cast aluminium body (EN 47100).
- Double layer polyester powder paint resistant to corrosion and salt spray fog.
- Silicone rubber gaskets.
- AISI 316 stainless steel external screws.

### Electrical & Optics

- Universal input voltage: 120-277V 50/60Hz.
- 0-10V dimming available.
- Wiring on removable galvanized steel tray.
- High-efficacy LEDs with standard 3000K, 4000K (2700K or other CCTs available on request).

### Listings

- UL certified to U.S. and Canadian standards, suitable for wet locations (cULus mark).
- Suitable for mounting within 1.2 m (4 ft) of ground.
- Rated IP66 per EN60598.
- Luminaire rated for -25°C minimum ambient temperature.
- High quality LED sources characterized according to IES TM-30, with high color consistency <3SDCM and long useful life >60000 hours at L80.

### Installation

- Surface installation.
- Die-cast aluminium base (EN 47100) for anchoring with rawlplugs.
- Supplied with steel base plate and j-shaped anchor bolts.
- Available on request zinc-plated steel pillar for reinforced anchoring.
- Supplied with power cord (18AWG conductors).
- Zinc-plated steel pillar for reinforced anchoring (accessory).

IP66



## VERSIONS *(Click on below link to configure your product)*



[top - oneway](#)

Size:  
5" 29/32  
5" 29/32  
35" 7/16



[top - twoway](#)

Size:  
5" 29/32  
5" 29/32  
35" 7/16



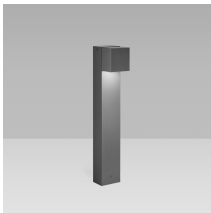
[top - oneway](#)

Size:  
5" 29/32  
5" 29/32  
35" 7/16



[top - twoway](#)

Size:  
5" 29/32  
5" 29/32  
35" 7/16



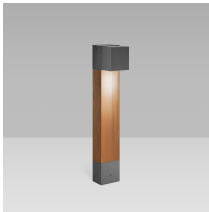
[side - single light fitting](#)

Size:  
5" 29/32  
7" 7/8  
35" 7/16



[side - double light fitting](#)

Size:  
5" 29/32  
11" 13/16  
35" 7/16



[side - single light fitting](#)

Size:  
5" 29/32  
7" 7/8  
35" 7/16



[side - double light fitting](#)

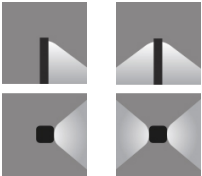
Size:  
5" 29/32  
11" 13/16  
35" 7/16

See accessories in the next page



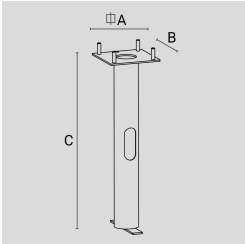
**OPTICS**





ZINC-COATED STEEL PILLAR.

Arcluce Code       **1099565X**  
Code Ref.

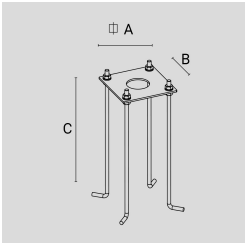


TECHNICAL INFORMATION

Weight	4.63 lb
--------	---------

GALVANIZED AND PAINTED STEEL BASE PLATE WITH GALVANIZED STEEL STUD BOLTS.

Arcluce Code       **1099564X-16**  
Code Ref.

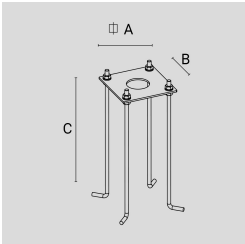


TECHNICAL INFORMATION

Color	Grey - 16
Weight	2.2 lb

GALVANIZED AND PAINTED STEEL BASE PLATE WITH GALVANIZED STEEL STUD BOLTS.

Arcluce Code       **1099564X-21**  
Code Ref.

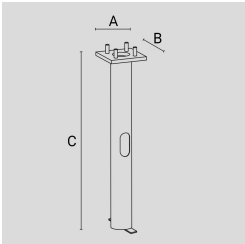


TECHNICAL INFORMATION

Color	Aluminium - 21
Weight	2.2 lb

ZINC-COATED STEEL PILLAR.

Arcluce Code       **1099563X**  
Code Ref.

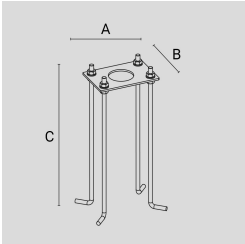


TECHNICAL INFORMATION

Weight	4.63 lb
--------	---------

GALVANIZED AND PAINTED STEEL BASE PLATE WITH GALVANIZED STEEL STUD BOLTS.

Arcluce Code       **1099562X-21**  
Code Ref.

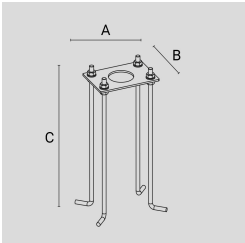


**TECHNICAL INFORMATION**

<b>Color</b>	Aluminium - 21
<b>Weight</b>	2.2 lb

GALVANIZED AND PAINTED STEEL BASE PLATE WITH GALVANIZED STEEL STUD BOLTS.

Arcluce Code       **1099562X-16**  
Code Ref.



**TECHNICAL INFORMATION**

<b>Color</b>	Grey - 16
<b>Weight</b>	2.2 lb