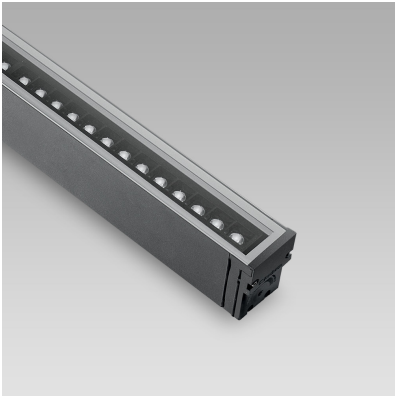


# KRION (Model)



## TECHNICAL INFORMATION

[IES Files](#) 

Watt	20W – 80W
Luminaire	Up to 8300lm
CCT	3000K – RGBW
CRI	>80
Wiring	120-277V 60Hz / 0-10V, 120-277V 60Hz RDM/DMX
LED life time	> 60000h - L80 - B20 (Ta 25°C)
Color	Aluminium - 21 / Grey - 16

## DESCRIPTION

### Construction

- Extruded aluminium body.
- Die-cast aluminium caps (EN 47100).
- Double layer polyester powder paint resistant to corrosion and salt spray fog.
- Silicone rubber gaskets.
- AISI 316 stainless steel external screws.
- Goniometer scale to aim light.

### Electrical & Optics

- 0-10V dimming available.
- High-efficacy LEDs with standard 3000K, 4000K (2700K or other CCTs available on request).
- PMMA lenses for LEDs.
- Screen made of 5/16" thermal-shock resistant tempered glass.

### Listings

- UL certified to U.S. and Canadian standards, suitable for wet locations (cULus mark).
- Suitable for mounting within 1.2 m (4 ft) of ground.
- Rated IP66 per EN60598.
- Luminaire rated for -20°C minimum ambient.
- High quality LED sources characterized according to IES TM-30, with high color consistency <3SDCM and long useful life >60000 hours at L80.

### Installation

- Surface installation.
- Double cable gland M20 for through wiring.
- Support brackets to be ordered separately.

IP66



## VERSIONS *(Click on below link to configure your product)*



[performance+](#)

Size:  
4" 1/4  
3" 15/32  
13" 5/8 to 48" 7/32

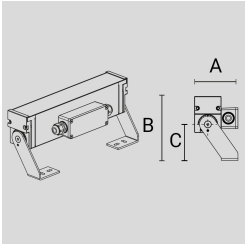
## OPTICS



See accessories in the next page

PAINTED STEEL REVOLVING SUPPORT BRACKETS (2 PCS).

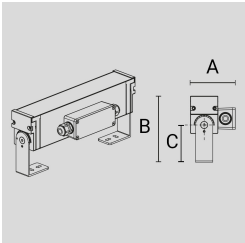
Arcluce Code      **1099373X-21**  
Code Ref.        **P8568-21**



TECHNICAL INFORMATION	
Color	Aluminium - 21
Weight	1.32 lb

PAINTED STEEL REVOLVING SUPPORT BRACKETS (2 PCS).

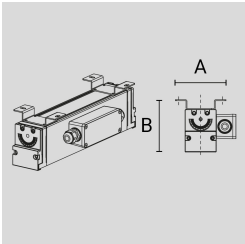
Arcluce Code      **1099370X-21**  
Code Ref.        **P8569-21**



TECHNICAL INFORMATION	
Color	Aluminium - 21
Weight	1.1 lb

PAINTED STEEL SUPPORT BRACKETS (2 PCS).

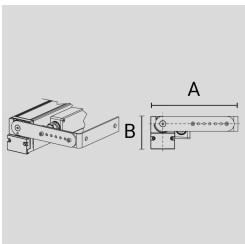
Arcluce Code      **1099371X-21**  
Code Ref.        **P8570-21**



TECHNICAL INFORMATION	
Color	Aluminium - 21
Weight	1.54 lb

PAINTED REVOLVING STEEL AND EXTENSIBLE SUPPORT BRACKETS (2 PCS).

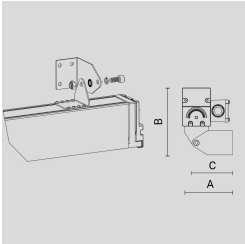
Arcluce Code      **1099372X-21**  
Code Ref.        **P8571-21**



TECHNICAL INFORMATION	
Color	Aluminium - 21
Weight	1.54 lb

ADJUSTING FIXING BRACKETS (2 PCS) - ALUMINIUM (RAL 9005)

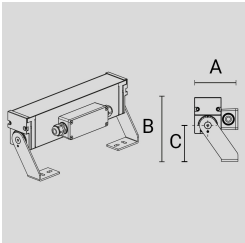
Arcluce Code       **1099577X-21**  
Code Ref.



TECHNICAL INFORMATION	
Color	Aluminium - 21
Weight	0.44 lb

PAINTED STEEL REVOLVING SUPPORT BRACKETS (2 PCS).

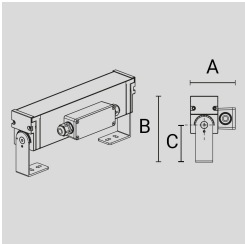
Arcluce Code       **1099373X-16**  
Code Ref.       **P8568-16**



TECHNICAL INFORMATION	
Color	Grey - 16
Weight	1.32 lb

PAINTED STEEL REVOLVING SUPPORT BRACKETS (2 PCS).

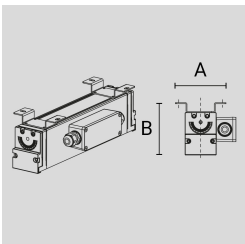
Arcluce Code       **1099370X-16**  
Code Ref.       **P8569-16**



TECHNICAL INFORMATION	
Color	Grey - 16
Weight	1.1 lb

PAINTED STEEL SUPPORT BRACKETS (2 PCS).

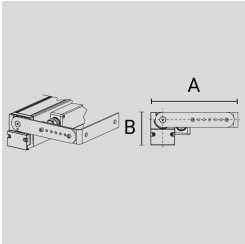
Arcluce Code       **1099371X-16**  
Code Ref.       **P8570-16**



TECHNICAL INFORMATION	
Color	Grey - 16
Weight	1.54 lb

PAINTED REVOLVING STEEL AND EXTENSIBLE SUPPORT BRACKETS (2 PCS).

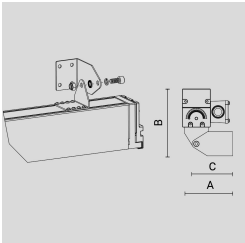
Arcluce Code       **1099372X-16**  
Code Ref.           **P8571-16**



TECHNICAL INFORMATION	
Color	Grey - 16
Weight	1.54 lb

ADJUSTING FIXING BRACKETS (2 PCS) GREY, SIMILAR TO (RAL 7024)

Arcluce Code       **1099577X-16**  
Code Ref.



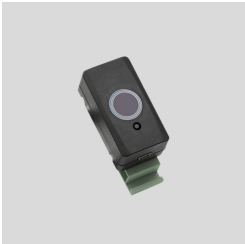
TECHNICAL INFORMATION	
Color	Grey - 16
Weight	0.44 lb

Arcluce Code       **1098009X**  
Code Ref.



TECHNICAL INFORMATION	
Weight	1.1 lb

Arcluce Code       **1098010X**  
Code Ref.



TECHNICAL INFORMATION	
Weight	1.1 lb